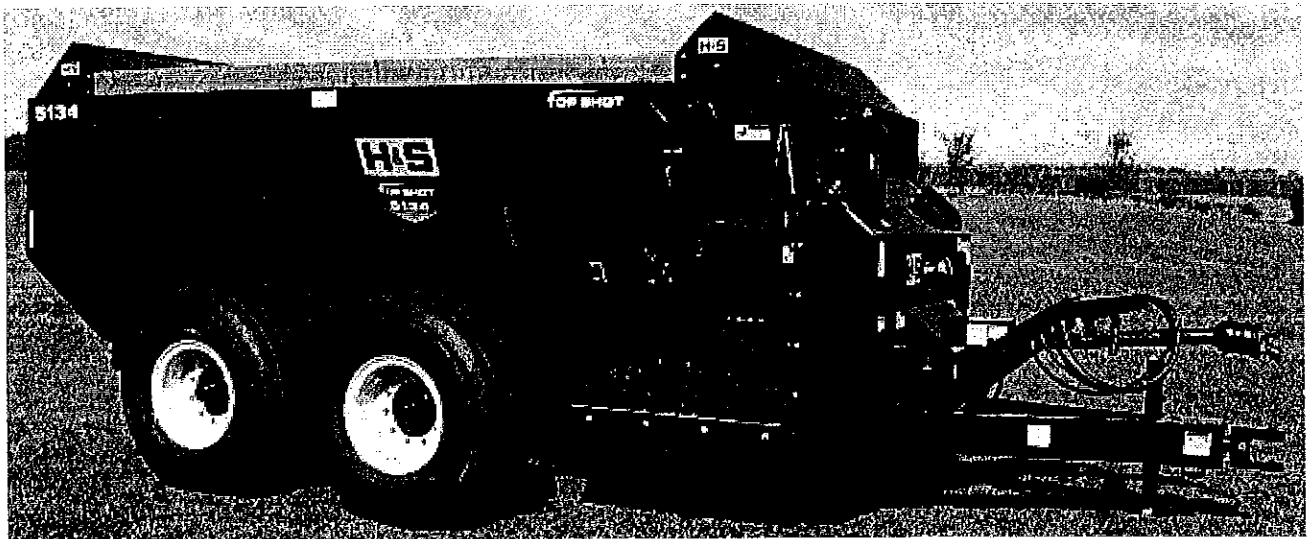


Same/not the same as 1330 Gale

H&S

5134 Top Shot Manure Spreaders



WARNING

READ AND UNDERSTAND THIS MANUAL
BEFORE OPERATING THIS EQUIPMENT

UNSAFE OPERATION OR MAINTENANCE OF THIS EQUIPMENT CAN RESULT IN
SERIOUS INJURY OR DEATH

OPERATOR'S MANUAL AND PARTS LIST

5134 Starting Serial #013001

HSMFG1210

Manufactured By
H&S MANUFACTURING CO., INC.

P.O. BOX 768 (715) 387-3414 FAX (715) 384-5463
MARSHFIELD, WISCONSIN 54449

Figure 1 Auger/Liner/Sides Hitch

<u>ITEM #</u>	<u>QUANTITY</u>	<u>PART #</u>	<u>DESCRIPTION</u>
1	1	TS200	AUGER
2	1	TS201	TUB SIDE POLY
3	1	TS4	POLY TOP HOLD DOWN
4	1	TS202	BACK PANEL
5	1	TS7	BACK SLIDER POLY
6	1	TS8	BACK SLIDER
7	1	TS9	REAR AUGER BUSHING
8	8	TS10	SLIDER GUIDE
9	6	TS308	SLIDER GUIDE THIN
10	1	TS203	FRONT POLY SLIDE
11	1	TS204	FRONT SLIDE PLATE
12	1	TS205	TRUNNION HOUSING
13	1	TS206	FRONT AUGER BEARING
14	1	TS207	AUGER INDICATOR TOP
15	1	TS208	AUGER INDICATOR BOTTOM
16	1	TS209	SCALE HITCH CLEVIS
17	1	TS210	HITCH BAR STRAIGHT
18	1	TS306	JACK, SIDE WIND, 7000LBS
19	1	TS19	AUGER BACK COLLAR
20	A/R	TS227	SPACER 2-17/32" (THICK)
*	A/R	TS28	SPACER 2-17/32" (THIN)
21	4	G89	1/4" GREASE ZERK
22	1	DWM133	1/8" 45° ZERK (RIGHT SIDE AXLE)
*	1	BFR28	1/8" NPT GREASE ZERK (LEFT SIDE AXLE)
23	1	RG51	GREASE ZERK 90 DEGREE
24	1	TS229	6" RUBBER RING
25	2	TS230	BUSHING 3/4" X 7/8"
26	1	TS320	WEAR PLATE 6 INCH
27	1	WM367	SAFETY CHAIN (OPTIONAL)
28	2	YBHH08100	BOLT, 1/4" X 3/4" GR. 5
29	2	YBHH10105	BOLT, 5/16" X 3/4" GR. 5
30	1	YBHH20101	BOLT, HEX HEAD, 5/8" X 6" GR. 8
31	2	YBHH24018	BOLT, HEX HEAD, 3/4"-10 X 2" GR. 8, YELLOW ZINC FINISH
32	2	YBHH32026	BOLT, HEX HEAD, 1" X 6" GR. 8
33	20	YBCR12010	CARR. BOLT, 3/8" X 1" GR. 5
34	8	YBCR12020	CARR. BOLT, 3/8" X 1-1/4" GR. 5
35	8	YBCR12015	CARR. BOLT, 3/8" X 1-1/2" GR. 5
36	1	YSHS12018	SOCKET HEAD CAP SCREW, 3/8" X 4"
37	12	YWFL10005	WASHER, FLAT, 5/16" USS
38	20	YWFL12005	WASHER, FLAT, 3/8" USS
39	2	YWLO08005	WASHER, LOCK, 1/4"
40	14	YWLO10005	WASHER, LOCK, 5/16"
41	36	YWLO12005	WASHER, LOCK, 3/8"
42	2	YWLO24005	WASHER, LOCK, 3/4"
43	2	YNHX08005	HEX NUT, 1/4"-20
44	14	YNHX10005	HEX NUT, 5/16"
45	36	YNHX12005	HEX NUT, 3/8"-16
46	1	YNL12005	HEX NUT, TOP LOCK, 3/8"-16
47	1	YNRL20005	HEX NUT, REVERSIBLE-SIDE LOCK, 5/8"-11
48	2	YNRL32005	HEX NUT, REVERSIBLE-SIDE LOCK, 1"-8

NOTE: * MEANS NOT SHOWN
A/R: AS REQUIRED

Figure 2 Auger & Expeller Drive

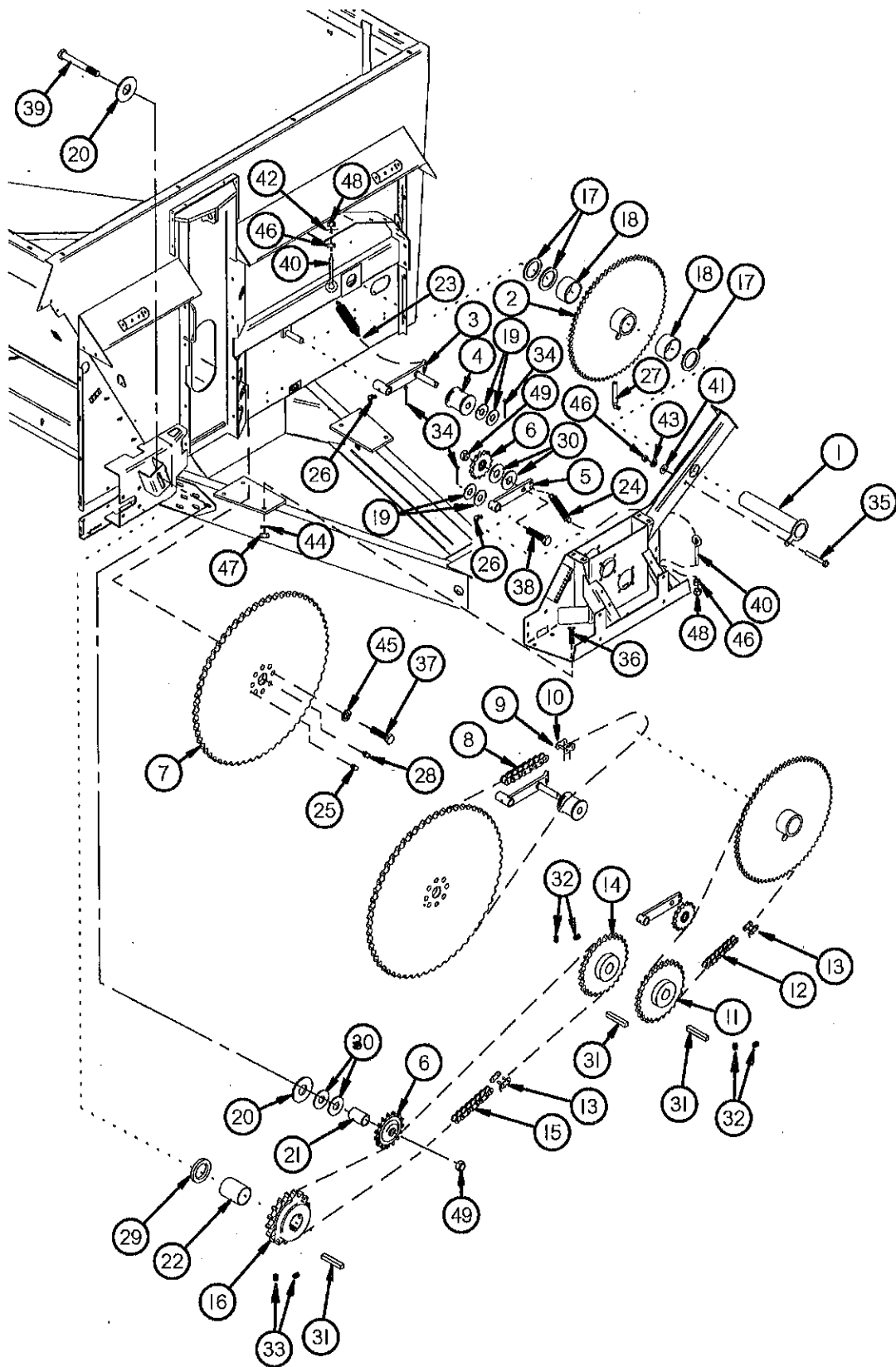


Figure 2 Auger & Expeller

<u>ITEM #</u>	<u>QUANTITY</u>	<u>PART #</u>	<u>DESCRIPTION</u>
1	1	TS211	COUNTER SHAFT
2	1	TS212	COUNTER SHAFT REDUCTION
3	1	TS213	AUGER CHAIN TENSIONER
4	1	TS25	ROLLER IDLER
5	1	TS214	CHAIN TENSIONER
6	2	16SV328	SPROCKET/IDLER ASSY
7	1	TS217	SPROCKET 140-B-54
8	1	TS218	CHAIN/ROLLER #140HE X 77
9	1	TS219	LINK/OFFSET (#140HE)
10	1	TS220	LINK/CONNECTOR (#140HE)
11	1	TS221	SPROCKET/DRIVE #80X14T (STANDARD)
*	1	TS372	SPROCKET/DRIVE #80X12T (OPTIONAL)
*	1	TS373	SPROCKET/DRIVE #80X15T (OPTIONAL)
*	1	TS374	SPROCKET/DRIVE #80X16T (OPTIONAL)
12	1	TS222	CHAIN/ROLLER #80HE X 98 (14T & 15T SPROCKETS)
*	1	TS375	CHAIN/ROLLER #80HE X 97 (12T SPROCKET)
*	1	TS376	CHAIN/ROLLER #80HE X 99 (16T SPROCKET)
13	2	TS223	LINK/CONNECTOR (#80HE)
14	1	TS224	SPROCKET #80X16T (STANDARD)
*	1	TS377	SPROCKET #80X12T (OPTIONAL)
*	1	TS378	SPROCKET #80X14T (OPTIONAL)
15	1	TS225	CHAIN/ROLLER #80HE X 84 (16T SPROCKET)
*	1	TS379	CHAIN/ROLLER #80HE X 82 (12T SPROCKET)
*	1	TS380	CHAIN/ROLLER #80HE X 83 (14T SPROCKET)
16	1	TS226	SPROCKET/80-B-17
17	A/R	TS227	SPACER 2-17/32" (THICK)
*	A/R	TS28	SPACER 2-17/32" (THIN)
18	2	TS228	BRONZE BUSHING
19	4	S345	1" SPACER
20	2	16SV376	SPACER .780 ID
21	1	TS230	BUSHING 3/4" X 7/8"
22	1	TS231	SPACER
23	1	BFR138	SPRING
24	1	10R14	SPRING/EXTENSION
25	1	G89	GREASE ZERK
26	2	RG51	GREASE ZERK 90 DEGREE
27	1	ZK90	ZERK, 90 DEGREE, 1-13/16" X 1/8" PIPE THREAD
28	1	BFR28	1/8" NPT GREASE ZERK #1610 (LEFT SIDE AXLE)
29	A/R	S36	SHIM, 3/16"
*	A/R	S409	SHIM, 1/8"
30	4	T73	WASHER
31	3	G139	3/8" X 1-1/2" SQ. KEY
32	4	YSKP12025	SET SCREW, SOCKET, KNURLED CUP PT, 3/8"-16 X 3/8"
33	2	YSKP12010	SET SCREW, SOCKET, KNURLED CUP PT, 3/8"-16 X 1/2"
34	3	YPCT05010	COTTER PIN, 5/32" X 1-1/2"
35	1	YBHH12110	BOLT, 3/8" X 2-3/4" GR. 5
36	6	YBHH20010	BOLT, 5/8" X 1-1/2" GR. 5
37	8	YBHH24041	BOLT, HEX HEAD, 3/4" X 2-3/4" GR. 8
38	1	YBHH24050	BOLT, 3/4" X 3" GR. 5
39	1	YBHH24055	BOLT, 3/4" X 3-1/2" GR. 5
40	2	YBTE12025	TURNED EYE BOLT, 3/8" X 3" FULL THREAD
41	1	YWFL10005	WASHER, FLAT, 5/16" USS
42	1	YWFL12005	WASHER, FLAT, 3/8" USS
43	1	YWLO12005	WASHER, LOCK, 3/8"
44	6	YWLO20005	WASHER, LOCK, 5/8"
45	8	YWLO24005	WASHER, LOCK, 3/4"
46	3	YNHX12005	HEX NUT, 3/8"-16
47	6	YNHX20005	HEX NUT, 5/8"-11
48	2	YNNY12005	HEX NUT, NYLON LOCKNUT, 3/8"
49	2	YNRL24005	HEX NUT, REVERSIBLE-SIDE LOCK, 3/4"-10

NOTE: * MEANS NOT SHOWN
A/R: AS REQUIRED

Figure 3
Expeller/Discharge Gate - Bearings

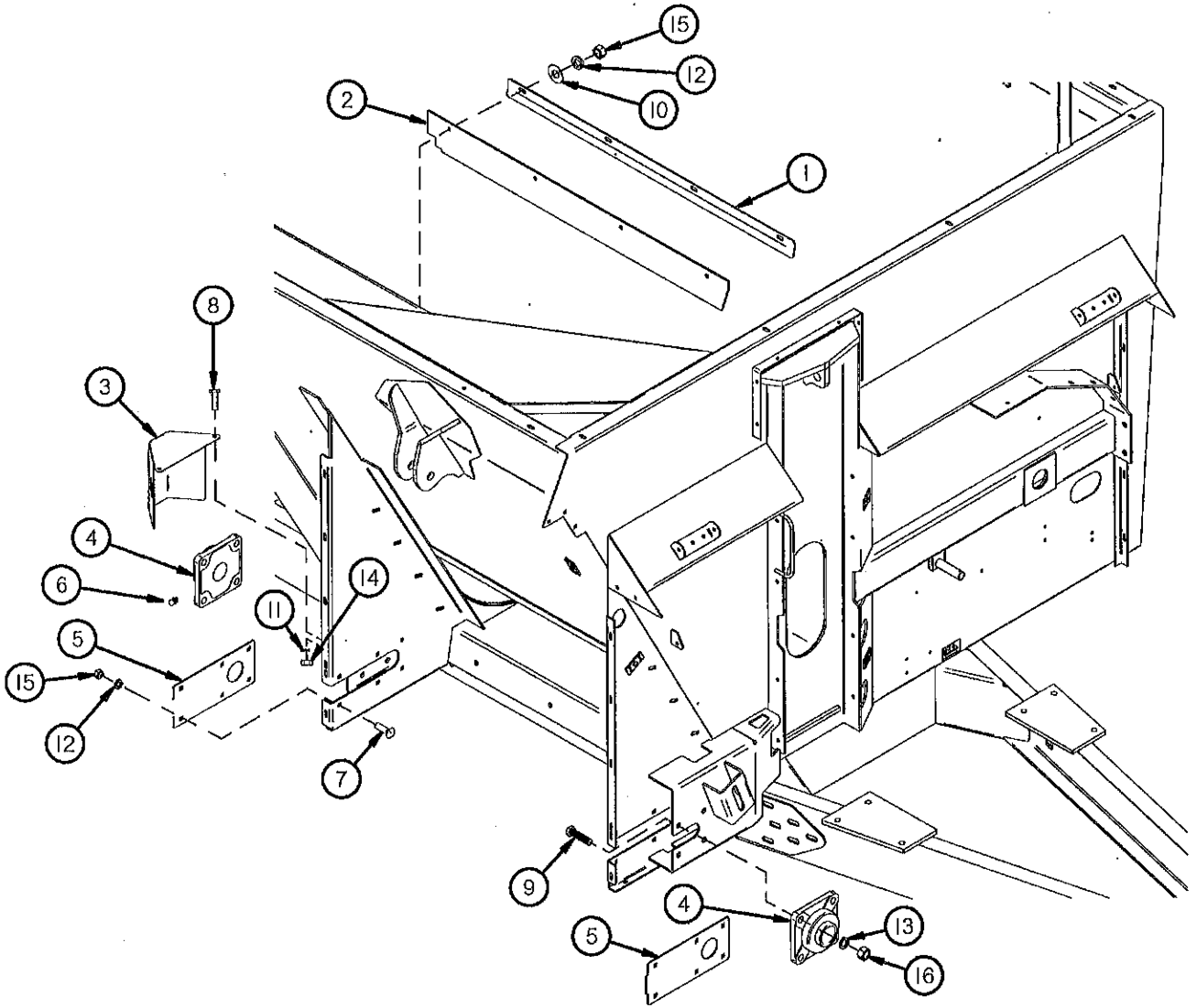


Figure 4
Expeller/Discharge Gate - Door

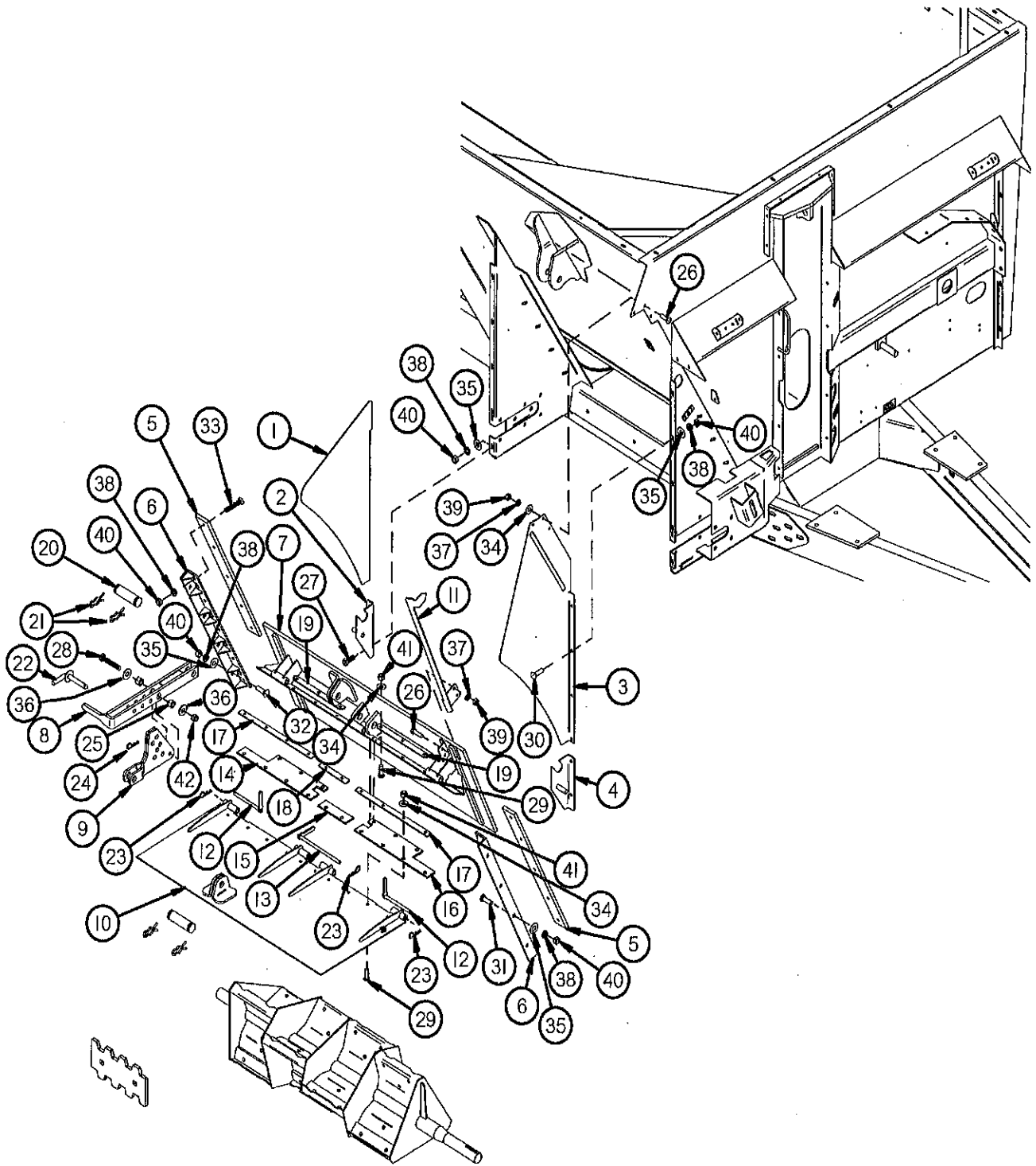


Figure 3 : Expeller/Discharge Gate - Bearings

<u>ITEM #</u>	<u>QUANTITY</u>	<u>PART #</u>	<u>DESCRIPTION</u>
1	1	TS43	DOOR SEAL CLAMP
2	1	TS44	EXPELLER DOOR TOP SEAL
3	1	TS45	EXPELLER BEARING SHIELD
4	2	HGV41	EXPELLER BEARING
5	2	TS47	COVER PLATE
6	1	G89	1/4"-28 STRAIGHT GREASE ZERK
7	12	YBCR12010	CARR. BOLT, 3/8" X 1" GR. 5
8	2	YBHH08100	BOLT, 1/4" X 3/4" GR. 5
9	8	YBHH18010	BOLT, 9/16" X 1-3/4" GR. 5
10	4	YWFL12005	WASHER, FLAT, 3/8" USS
11	2	YWLO08005	WASHER, LOCK, 1/4"
12	16	YWLO12005	WASHER, LOCK, 3/8"
13	8	YWLO18005	WASHER, LOCK, 9/16"
14	2	YNHX08005	HEX NUT, 1/4"-20
15	16	YNHX12005	HEX NUT, 3/8"-16
16	8	YNHX18005	HEX NUT, 9/16"-12

Figure 4 Expeller/Discharge Gate - Door

<u>ITEM #</u>	<u>QUANTITY</u>	<u>PART #</u>	<u>DESCRIPTION</u>
1	1	TS232	EXPELLER SPOUT LEFT HAND
2	1	TS49	PAN HINGE BRACKET LEFT
3	1	TS233	EXPELLER SPOUT RIGHT HAND
4	1	TS51	PAN HINGE BRACKET RIGHT
5	2	TS52	DOOR SLIDER POLY
6	2	TS53	EXPELLER DOOR GUIDE
7	1	TS54	EXPELLER DOOR
8	1	TS55	DEFLECTOR ADJUSTMENT HANDLE
9	1	TS56	DEFLECTOR ADJUSTMENT LINK
10	1	TS57	ADJUSTABLE FLAT DEFLECTOR
11	1	TS58	DOOR INDICATOR
12	2	TS59	DEFLECTOR SIDE PIN
13	1	TS60	DEFLECTOR MID PIN
14	1	TS61	DEFLECTOR SEAL LEFT
15	1	TS62	DEFLECTOR SEAL MID
16	1	TS63	DEFLECTOR SEAL RIGHT
17	2	TS64	SEAL STRAP LONG
18	1	TS65	SEAL STRAP MID
19	2	TS66	SEAL STRAP SHORT
20	2	T143	CYLINDER PIN
21	4	T144	CLIP PIN
22	1	TS69	CASTER LOCKING PIN
23	3	X97	HAIR PIN
24	1	WM378	HAIR PIN W/ LANYARD
25	2	TS307	HANDLE PIVOT
26	5	YBHH10105	BOLT, 5/16" X 3/4" GR. 5
27	4	YBHH12010	BOLT, 3/8" X 1" GR. 5
28	1	YBHH16105	BOLT, 1/2" X 3" GR. 5
29	16	YBCR10010	CARR. BOLT, 5/16" X 1" GR. 5
30	8	YBCR12010	CARR. BOLT, 3/8" X 1" GR. 5
31	7	YBCR12020	CARR. BOLT, 3/8" X 1-1/4" GR. 5
32	1	YBCR12015	CARR. BOLT, 3/8" X 1-1/2" GR. 5
33	10	YSFS12005	FLAT HEAD SOCKET CAP SCREW, 3/8" X 1-1/4"
34	19	YWFL10005	WASHER, FLAT, 5/16" USS
35	20	YWFL12005	WASHER, FLAT, 3/8" USS
36	2	YWFL16005	WASHER, FLAT, 1/2" USS
37	5	YWLO10005	WASHER, LOCK, 5/16"
38	30	YWLO12005	WASHER, LOCK, 3/8"
39	5	YNHX10005	HEX NUT, 5/16"
40	30	YNHX12005	HEX NUT, 3/8"-16
41	16	YNTL10005	HEX NUT, TOP LOCK, 5/16"-18
42	1	YNTL16005	HEX NUT, TOP LOCK, 1/2"-13

Figure 5
Expeller/Discharge Gate - Pan

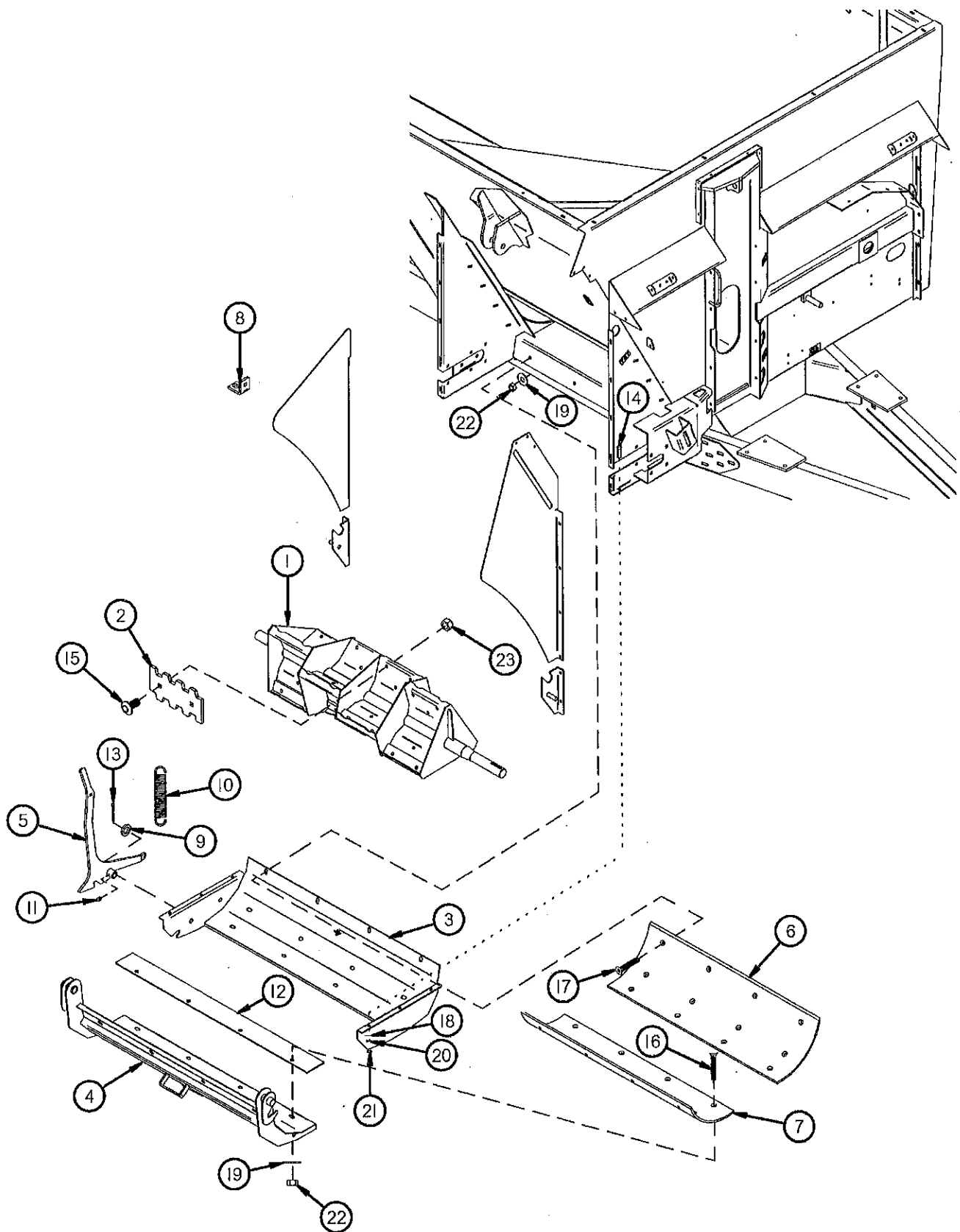


Figure 5 Expeller/Discharge Gate - Pan

<u>ITEM #</u>	<u>QUANTITY</u>	<u>PART #</u>	<u>DESCRIPTION</u>
1	1	TS67	EXPELLER
2	12	TS68	EXPELLER PADDLE
3	1	TS72	SWING AWAY PAN FRAME
4	1	TS73	SWING AWAY PAN
5	1	TS74	PAN LATCH HANDLE
6	1	TS75	EXPELLER BACK POLY
7	1	TS76	EXPELLER PAN POLY
8	1	56N146	SHIELD ANGLE
9	3	T73	SPACER
10	1	K103	SPRING
11	1	G89	1/4"-28 STRAIGHT GREASE ZERK
12	1	TS18	PAN RUBBER SEAL
13	1	YPCT06010	COTTER PIN, 3/16" X 1-1/4"
14	6	YBCR10010	CARR. BOLT, 5/16" X 1" GR. 5
15	24	YBCR16019	SHAKER SCREEN BOLT, 1/2" X 1-3/4" GR. 8
16	20	YSFS16010	FLAT HEAD SOCKET CAP SCREW, 1/2" X 1-1/2"
17	4	YSFS16020	FLAT HEAD SOCKET CAP SCREW, 1/2" X 1-3/4"
18	6	YWFL10005	WASHER, FLAT, 5/16" USS
19	24	YWFL16005	WASHER, FLAT, 1/2" USS
20	6	YWLO10005	WASHER, LOCK, 5/16"
21	6	YNHX10005	HEX NUT, 5/16"
22	24	YNRL16005	HEX NUT, REVERSIBLE-SIDE LOCK, 1/2"-13
23	24	YNL16006	HEX NUT, TOP LOCK, 1/2"-13 GR. 9

Figure 6
Guards/Shields

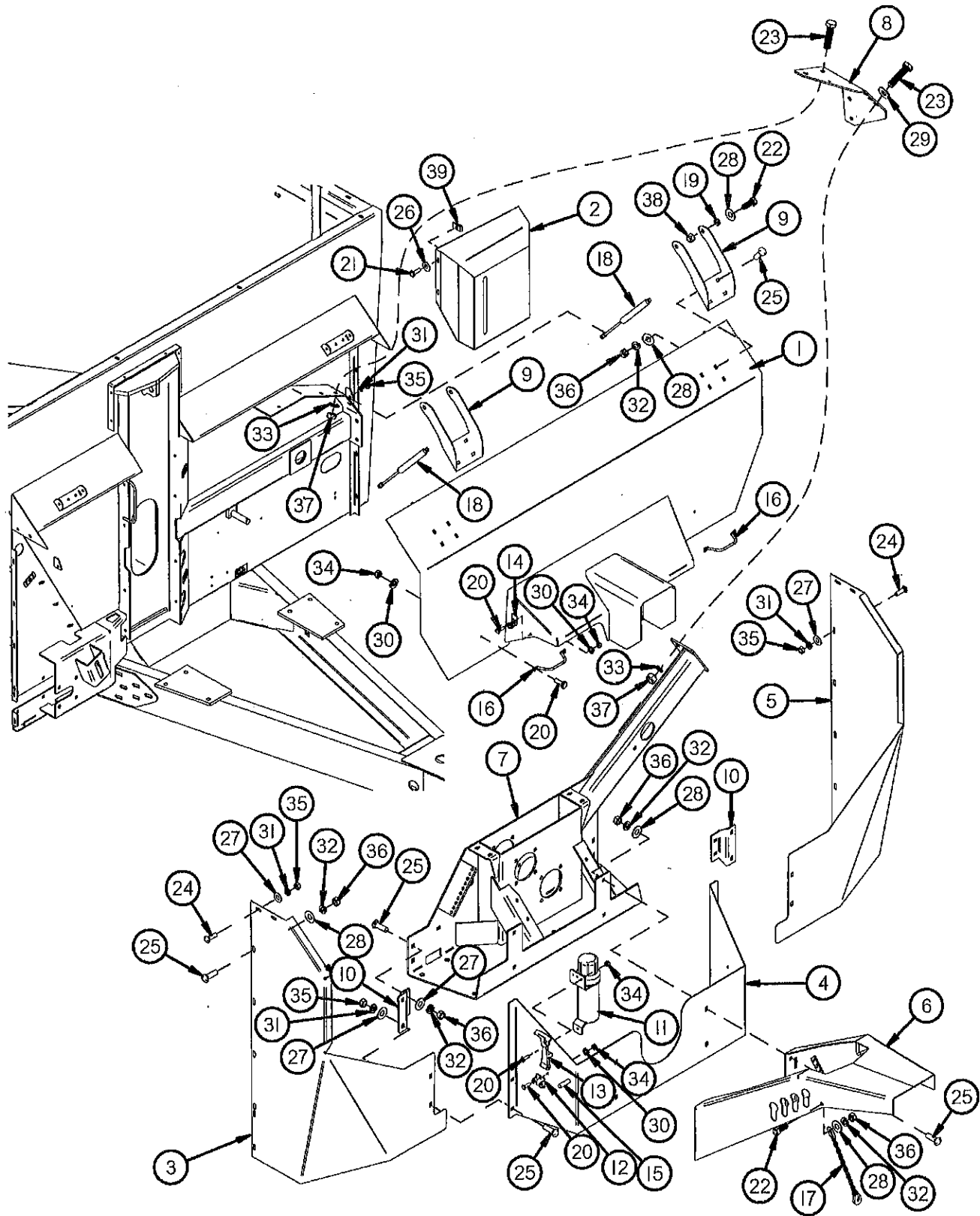


Figure 6 Guards/Shields

<u>ITEM #</u>	<u>QUANTITY</u>	<u>PART #</u>	<u>DESCRIPTION</u>
1	1	TS234	FRONT SHIELD
2	1	TS235	FRONT CYLINDER COVER
3	1	TS236	FRONT SHIELD RIGHT SIDE
4	1	TS237	GEARBOX SHIELD
5	1	TS238	FRONT SHIELD LEFT SIDE
6	1	TS239	HOSE HOLDER
7	1	TS240	GEARBOX
8	1	TS241	JACKSHAFT BRACE
9	2	TS242	SHIELD HINGE
10	2	TS243	FRONT SHIELD MOUNT
11	1	S522	MAUNAL HOLDER
12	2	X194	LATCH MOUNT
13	2	X192	RUBBER LATCH
14	2	X193	LATCH KEEPER
15	2	X195	LATCH PIN
16	2	TS96	SHIELD HANDLE
17	1	TS130	CHAIN PTO HOLDER
18	2	TS244	GAS STRUT
19	4	GM180	SPACER
20	11	YBHH08015	BOLT, 1/4" X 1/2" GR. 5
21	4	YBHH08100	BOLT, 1/4" X 3/4" GR. 5
22	5	YBHH12010	BOLT, 3/8" X 1" GR. 5
23	8	YBHH20010	BOLT, 5/8" X 1-1/2" GR. 5
24	8	YBCR10030	CARR. BOLT, 5/16" X 3/4" GR. 5
25	24	YBCR12010	CARR. BOLT, 3/8" X 1" GR. 5
26	4	YWFL08005	WASHER, FLAT, 1/4" USS
27	8	YWFL10005	WASHER, FLAT, 5/16" USS
28	29	YWFL12005	WASHER, FLAT, 3/8" USS
29	3	YWFL20005	WASHER, FLAT, 5/8" USS
30	8	YWLO08005	WASHER, LOCK, 1/4"
31	10	YWLO10005	WASHER, LOCK, 5/16"
32	25	YWLO12005	WASHER, LOCK, 3/8"
33	8	YWLO20005	WASHER, LOCK, 5/8"
34	11	YNHX08005	HEX NUT, 1/4"-20
35	10	YNHX10005	HEX NUT, 5/16"
36	25	YNHX12005	HEX NUT, 3/8"-16
37	8	YNHX20005	HEX NUT, 5/8"-11
38	4	YNTL12005	HEX NUT, TOP LOCK, 3/8"-16
39	4	YNUN08005	EXTRUDED U NUT, 1/4"-20

Figure 7
Splash Guards/Rails

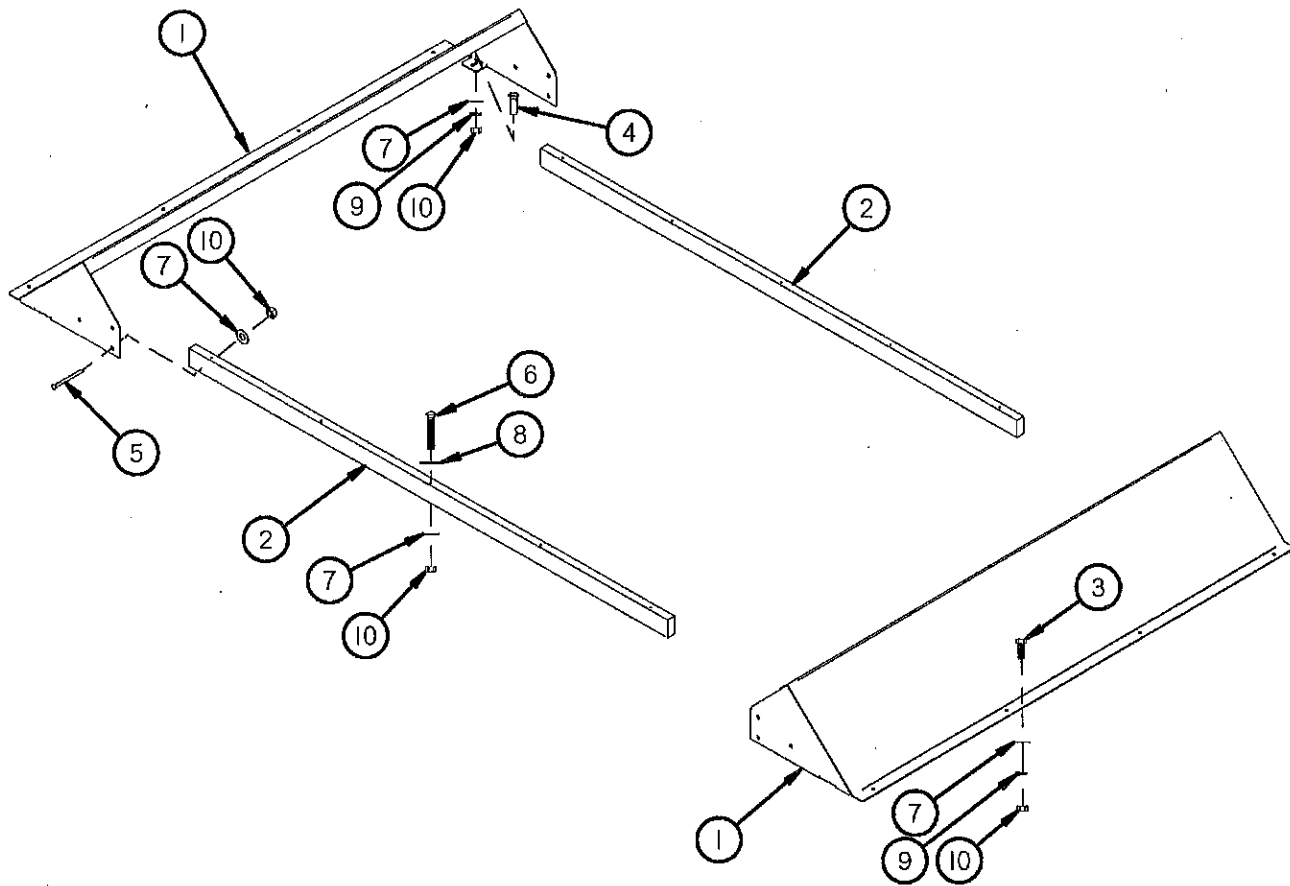


Figure 7 Splash Guards/Rails

<u>ITEM #</u>	<u>QUANTITY</u>	<u>PART #</u>	<u>DESCRIPTION</u>
1	2	TS245	SPLASH GUARD
2	2	TS100	WOOD RAIL
3	8	YBHH12010	BOLT, 3/8" X 1" GR. 5
4	4	YBCR12010	CARR. BOLT, 3/8" X 1" GR. 5
5	12	YBCR12080	CARR. BOLT, 3/8" X 3-1/4" GR. 5
6	10	YBCR12125	CARR. BOLT, 3/8" X 6-1/2" GR. 2
7	34	YWFL12005	WASHER, FLAT, 3/8" USS
8	10	YWFL16005	WASHER, FLAT, 1/2" USS
9	12	YWLO12005	WASHER, LOCK, 3/8"
10	34	YNHX12005	HEX NUT, 3/8"-16

Figure 8 Hydraulics

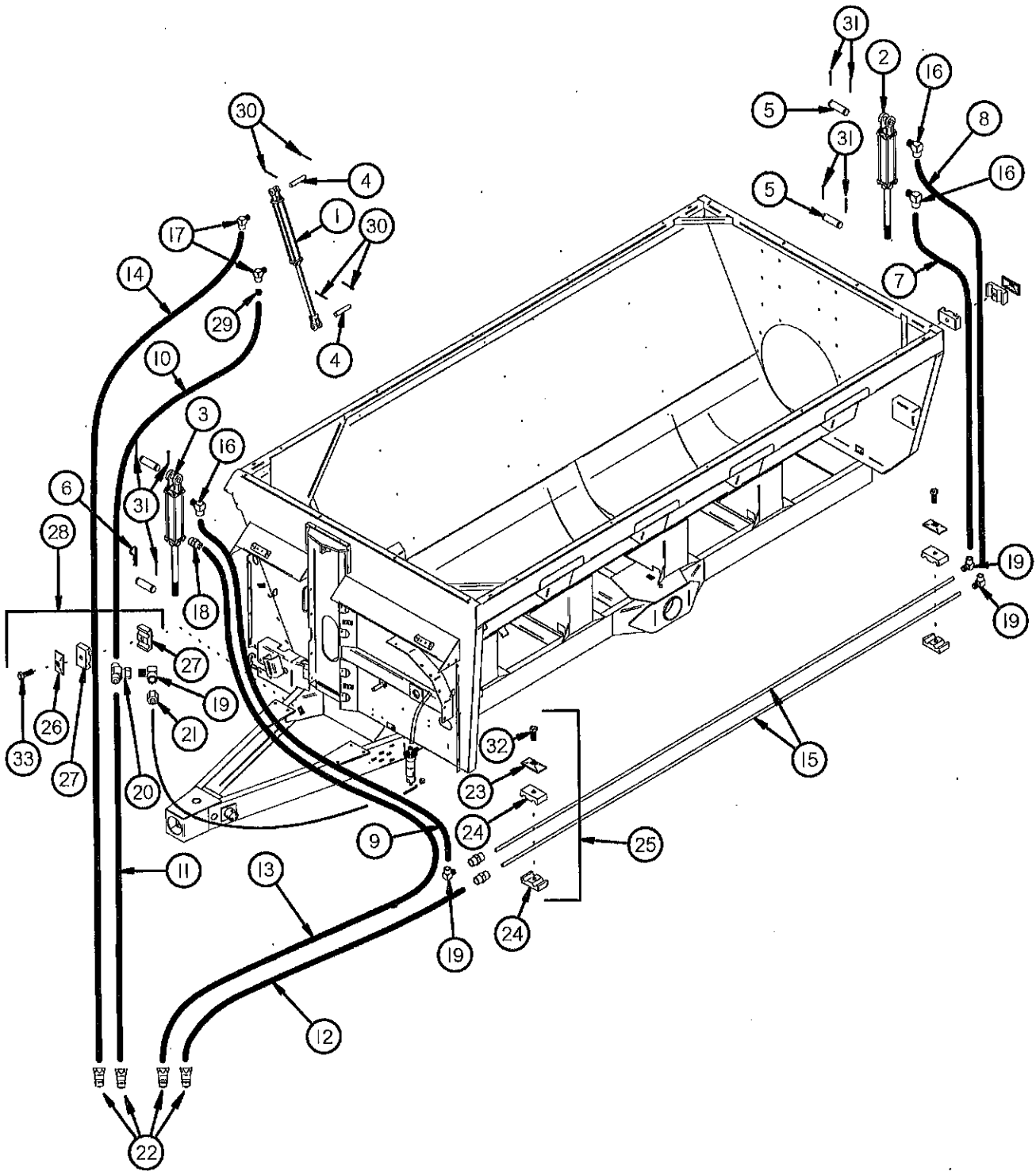


Figure 9
Tandem Axles

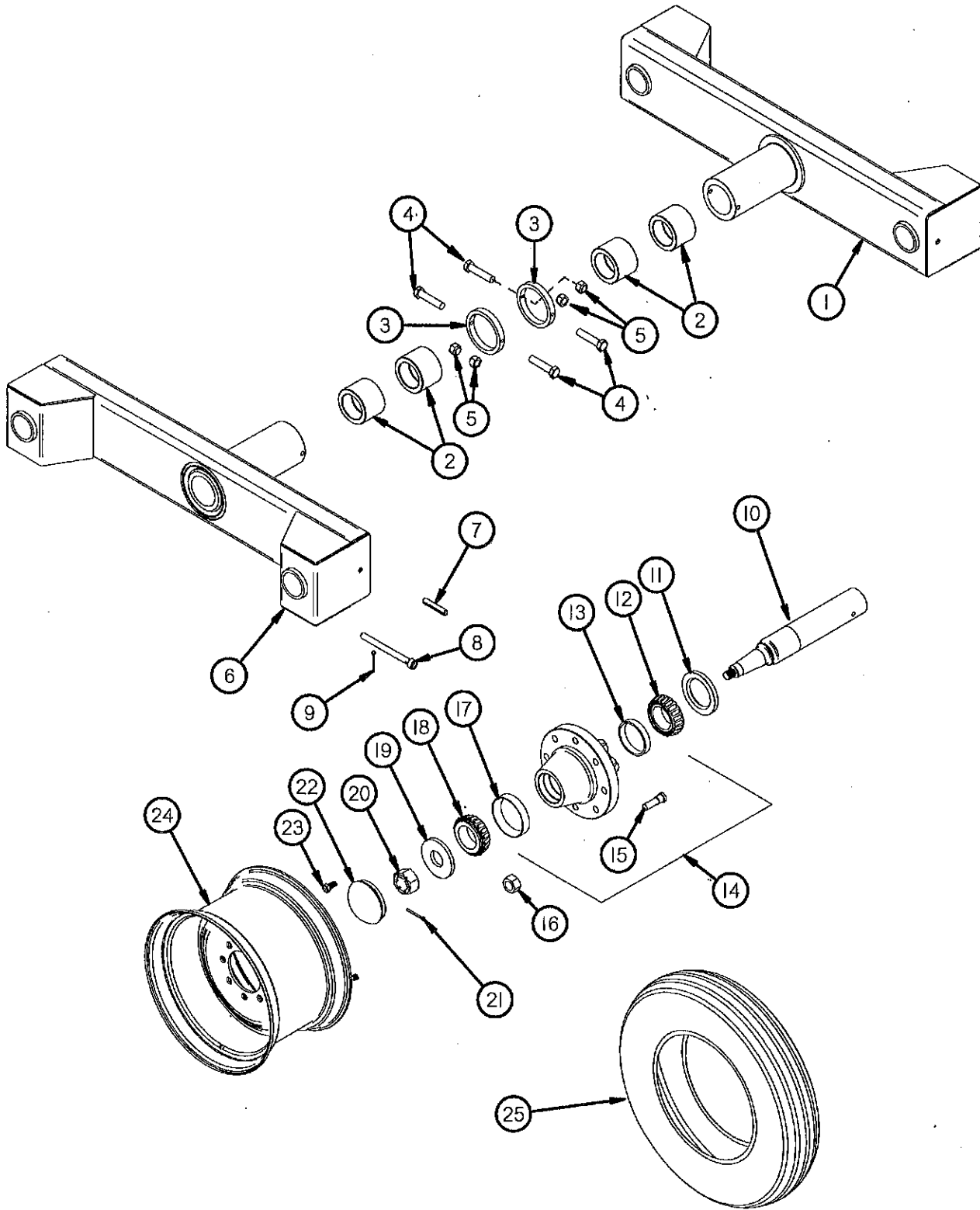


Figure 8 Hydraulics

<u>ITEM #</u>	<u>QUANTITY</u>	<u>PART #</u>	<u>DESCRIPTION</u>
1	1	23N111A	2 X 16 CYLINDER
2	1	TS105	3-1/4 x 8 CYLINDER
3	1	TS104	3 X 8 CYLINDER
4	2	LW55	CYLINDER PIN
5	4	T143	CYLINDER PIN
6	1	ES7	HAIR PIN
7	1	TS115	HYD. HOSE 1/2" X 49" -8 JIC FEMALE SWIVEL & -8 JIC MALE
8	1	TS247	HYD. HOSE 1/2" X 60" -8 JIC FEMALE SWIVEL & -8 JIC MALE
9	1	TS248	HYD. HOSE 1/2" X 62" -8 JIC FEMALE SWIVEL & -8 JIC MALE
10	1	TS249	HYD. HOSE 1/2" X 81" -8 JIC FEMALE SWIVEL & -8 JIC FEMALE SWIVEL
11	1	TS250	HYD. HOSE 1/2 X 110" -8 JIC FEMALE SWIVEL & 1/2 MP
12	1	TS251	HYD. HOSE 1/2 X 124" -8 JIC MALE & 1/2 MP
13	1	TS252	HYD. HOSE 1/2 X 176" -8 JIC FEMALE SWIVEL & 1/2 MP
14	1	TS253	HYD. HOSE 1/2 X 200" -8 JIC FEMALE SWIVEL & 1/2 MP
15	2	TS116	HYDRAULIC LINE
16	3	TS135	-8 MALE O-RING TO -8 MALE JIC 90°
17	2	TS136	3/8" MALE PIPE TO -8 MALE JIC 90°
18	1	TS137	-8 MALE O-RING TO -8 MALE JIC
19	4	TS138	-8 FEMALE JIC SWIVEL TO -8 MALE JIC 90°
20	1	TS139	-8 JIC SWIVEL BRANCH TEE
21	1	TS299	-8 MALE JIC TO 3/8" FEMALE PIPE
22	4	DWM205	QUICK COUPLER MALE
23	3	TS117	LINE CLAMP CAP
24	6	TS118	LINE CLAMP BLOCK
25	3	T2008S	DOUBLE STEEL LINE CLAMP
26	11	GM69	LINE CLAMP CAP
27	22	GM70	LINE CLAMP BLOCK
28	11	GM9	HOSE CLAMP 1/2" TWIN (COMPLETE)
29	1	TS197	ORIFACE .031
30	4	YPCT05010	COTTER PIN, 5/32" X 1-1/2"
31	7	YPCT06005	COTTER PIN, 3/16" X 1-1/2"
32	3	YBHH10030	BOLT, 5/16" X 1-1/2" GR. 5
33	11	YBHH10055	BOLT, 5/16" X 1-3/4" GR. 5

Figure 9 Tandem Axles

<u>ITEM #</u>	<u>QUANTITY</u>	<u>PART #</u>	<u>DESCRIPTION</u>
1	1	TS254	TANDEM AXLE LEFT 12000 LB
*	1	TS255	TANDEM AXLE LEFT 15000 LB (OPTIONAL)
2	4	TS256	PHENOLIC BUSHING
3	4	TS257	COLLAR FOR AXLE
4	4	YBHH16095	BOLT, 1/2" X 2-1/4" GR. 5
5	4	YNL16005	HEX NUT, TOP LOCK, 1/2"-13
6	1	TS258	TANDEM AXLE RIGHT 12000 LB
*	1	TS259	TANDEM AXLE RIGHT 15000 LB (OPTIONAL)
7	4	31N4	ROLL PIN
8	4	TS260	SPINDLE PIN (USED WITH OPTIONAL TANDEM ONLY)
9	4	YPCT06020	COTTER PIN, 3/16" X 2" (USED WITH OPTIONAL TANDEM)
10	4	TS46	TANDEM SPINDLE
*	4	TS394	TANDEM SPINDLE (15000 LB HUB)
11	4	60N5	SEAL
*	4	TS387	SEAL
12	4	60N7	INNER BEARING
*	4	TS388	INNER BEARING
13	4	60N6	INNER RACE
*	4	TS389	INNER RACE
14	4	60N8	HUB 10 BOLT 12000# (INC. INNER/OUTER RACES & STUD BOLTS)
*	4	TS395	HUB 10 BOLT 15000# (INC. INNER/OUTER RACES & STUD BOLTS)
*	4	TS261	HUB 10 BOLT 15000 LBS W/ SPINDLE
15	40	YBSD24010	STUD BOLT, 3/4"-16 UNF X 2-3/4" (3/4" SHOULDER)
16	40	YNWL24005	WHEEL NUT, 3/4"-16 UNF GR. 8
17	4	60N10	OUTER RACE
*	4	TS390	OUTER RACE
18	4	60N9	OUTER BEARING
*	4	TS391	OUTER BEARING
19	4	60N2	WASHER
*	4	TS392	WASHER
20	4	YNCA36005	HEX NUT, CASTLE, 1-1/4"-12
*	4	YNL44005	HEX NUT, SLOTTED, 2"-12
21	4	YPCT07005	COTTER PIN, 7/32" X 2"
*	4	YPCT10020	COTTER PIN, 5/16" X 4"
22	4	60N11	HUB CAP
*	4	TS393	HUB CAP
23	16	YBHH10020	BOLT, 5/16" X 1/2" GR. 5
24	4	60N15	WHEEL 13.5 X 22.5 (10 BOLT)
*	4	60N16	WHEEL 18 X 16.1
*	4	TS262	WHEEL 24 X 22.5
25	4	66N16	TIRE 445 X 22.5
*	4	50N7	TIRE 21.5L X 16.1
*	4	TS264	TIRE 700/50 X 22.5 FLOATATION
*	4	TS263	TIRE 49 X 19 X 20 AIRCRAFT W/RIM (ASSEMBLY)
*	4	TS340	AIRCRAFT TIRE, 49X19X20, 32 PLY
*	4	TS341	WHEEL 13.5 X 20, 10 HOLE
*	4	TS342	TUBE, 1600/1800-20
*	4	TS343	FLAP, 20X14

NOTE: * MEANS NOT SHOWN

Figure 10
Oiler Kit

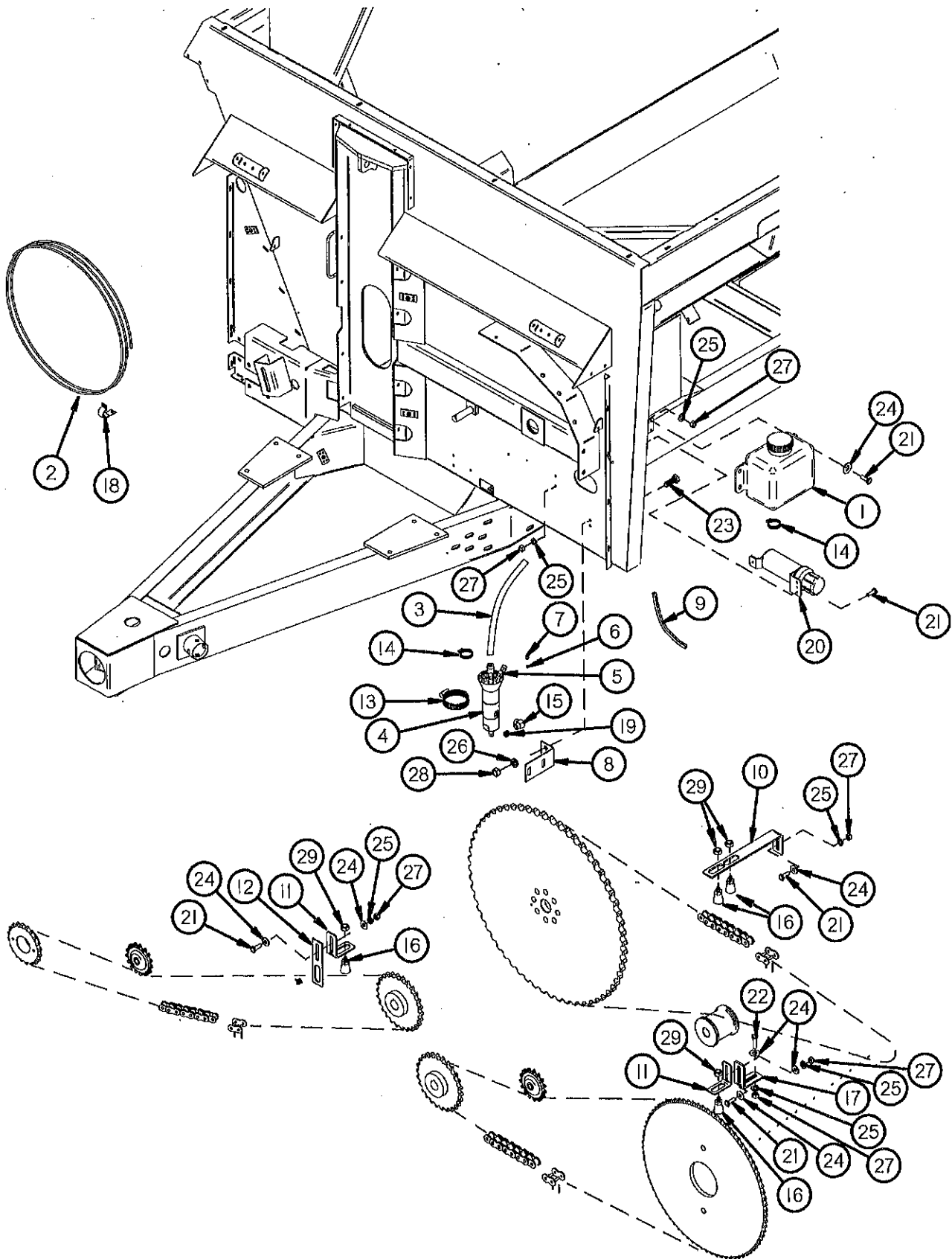


Figure 10 Oiler Kit

<u>ITEM #</u>	<u>QUANTITY</u>	<u>PART #</u>	<u>DESCRIPTION</u>
1	1	HGV63	RESERVOIR
2	1	HGV71	OIL TUBE
3	1	HGV66	FILLER HOSE
4	1	HGV82	PUMP (COMPLETE)
5	4	HGV86	STANDOFF
6	4	HGV87	FERRULE
7	4	HGV85	SLEEVE NUT
8	1	HGV68	PUMP MOUNT BRACKET
9	1	HGV77	EDGING
10	1	TS322	EXTRA LONG BRUSH BRACKET
11	2	TS98	OILER BRUSH BRACKET SINGLE
12	1	HGV70	BRACKET MOUNT
13	1	HGV74	2" HOSE CLAMP
14	2	HGV75	1" HOSE CLAMP
15	1	HGV65	O-RING/JIC ELBOW
16	4	HGV67	BRUSH
17	1	TS321	OILER HANGER 1
18	2	HGV162	1/2" RUBBER WIRE HOLDER
*	2	TS269	1/4" RUBBER WIRE HOLDER
*	2	YSHW08005	ROLLING SCREW, 1/4"-20 X 3/8", HEX WASHER HEAD Z THREAD, UNSLOTTED
19	1	TS198	ORIFACE .015 (4XHX7-S)
20	1	S522	MANUAL HOLDER
21	10	YBHH08100	BOLT, 1/4" X 3/4" GR. 5
22	1	YBHH08010	BOLT, 1/4" X 1" GR. 5
23	2	YBHH12135	BOLT, 3/8" X 3/4" GR. 5
24	10	YWFL08005	WASHER, FLAT, 1/4" USS
25	11	YWLO08005	WASHER, LOCK, 1/4"
26	2	YWLO12005	WASHER, LOCK, 3/8"
27	11	YNHX08005	HEX NUT, 1/4"-20
28	2	YNHX12005	HEX NUT, 3/8"-16
28	4	YNHX16005	HEX NUT, 1/2"

NOTE: * MEANS NOT SHOWN

Figure 11
Front Grease Lines

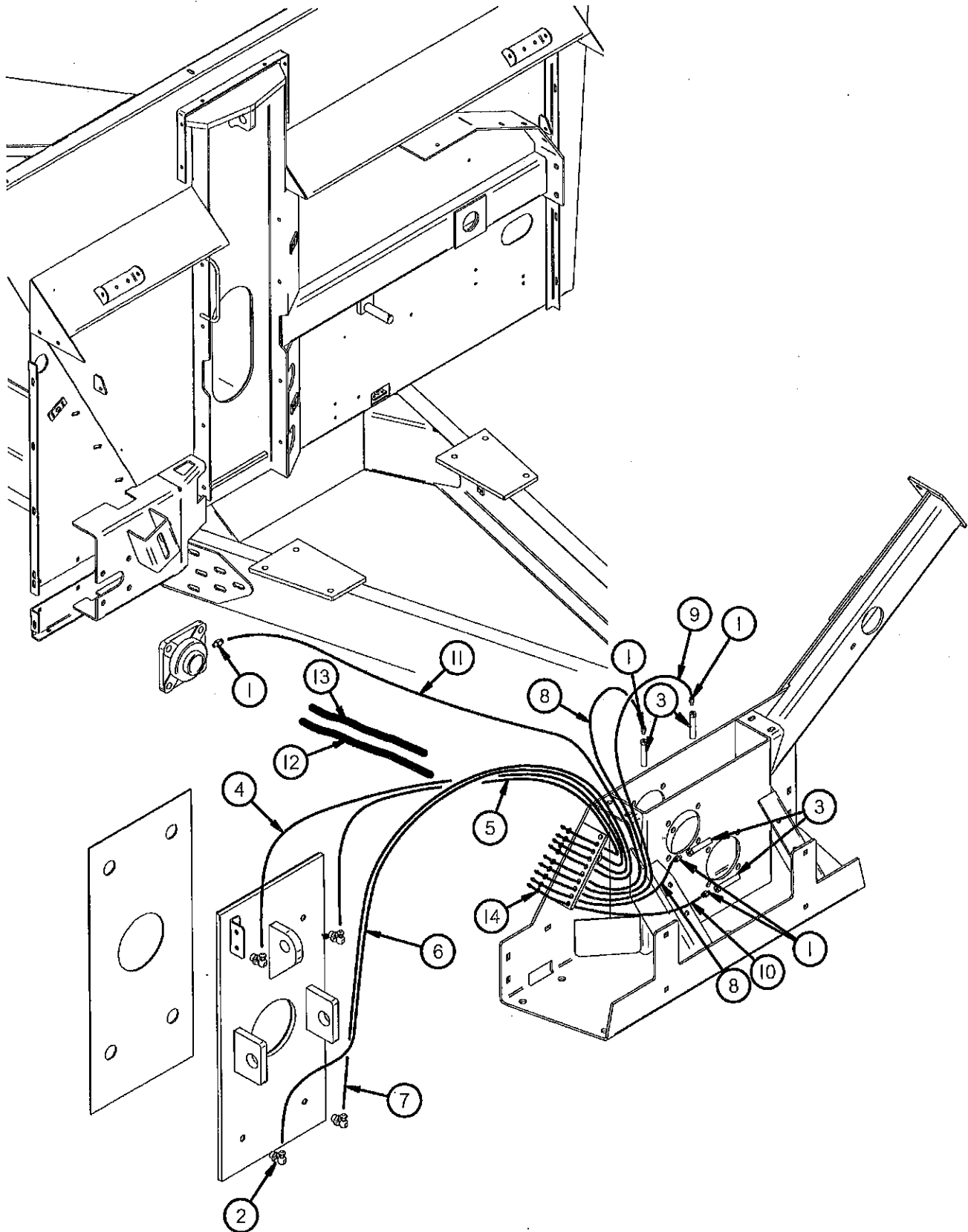
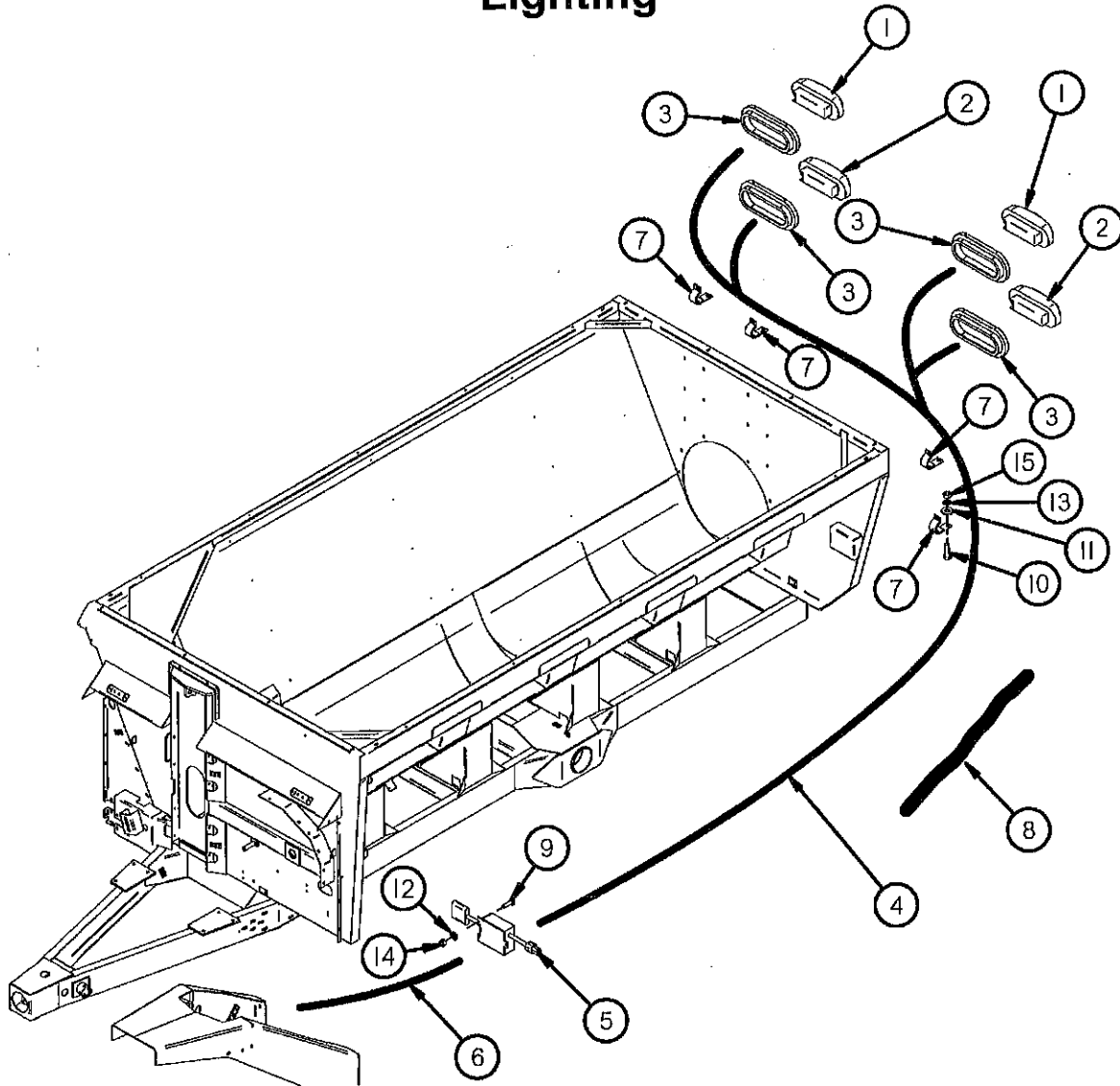


Figure 11 Front Grease Lines

<u>ITEM #</u>	<u>QUANTITY</u>	<u>PART #</u>	<u>DESCRIPTION</u>
1	5	TS323	1/4"-28 TO 1/8" PIPE ADAPTER
2	4	GM30	1/8" 90° GREASE LINE ADAPTER
3	4	45N57	1/8" NPT X 2-5/8" LONG GREASE ZERK
4	1	TS265	GREASE LINE - 81
5	1	TS266	GREASE LINE - 82
6	1	TS267	GREASE LINE - 97
7	1	TS268	GREASE LINE - 101
8	2	TS270	GREASE LINE - 8.5
9	1	TS271	GREASE LINE - 13.5
10	1	TS272	GREASE LINE - 14.5
11	1	TS273	GREASE LINE - 46
12	1	TS246	SPLIT LOOM 3/4" X 18"
13	1	TS332	SPLIT LOOM 3/4" X 14"
*	2	HGV72	3/4" RUBBER WIRE HOLDER
14	9	YNML99005	M10-1.0 JAM NUT A2 SS

NOTE: * MEANS NOT SHOWN

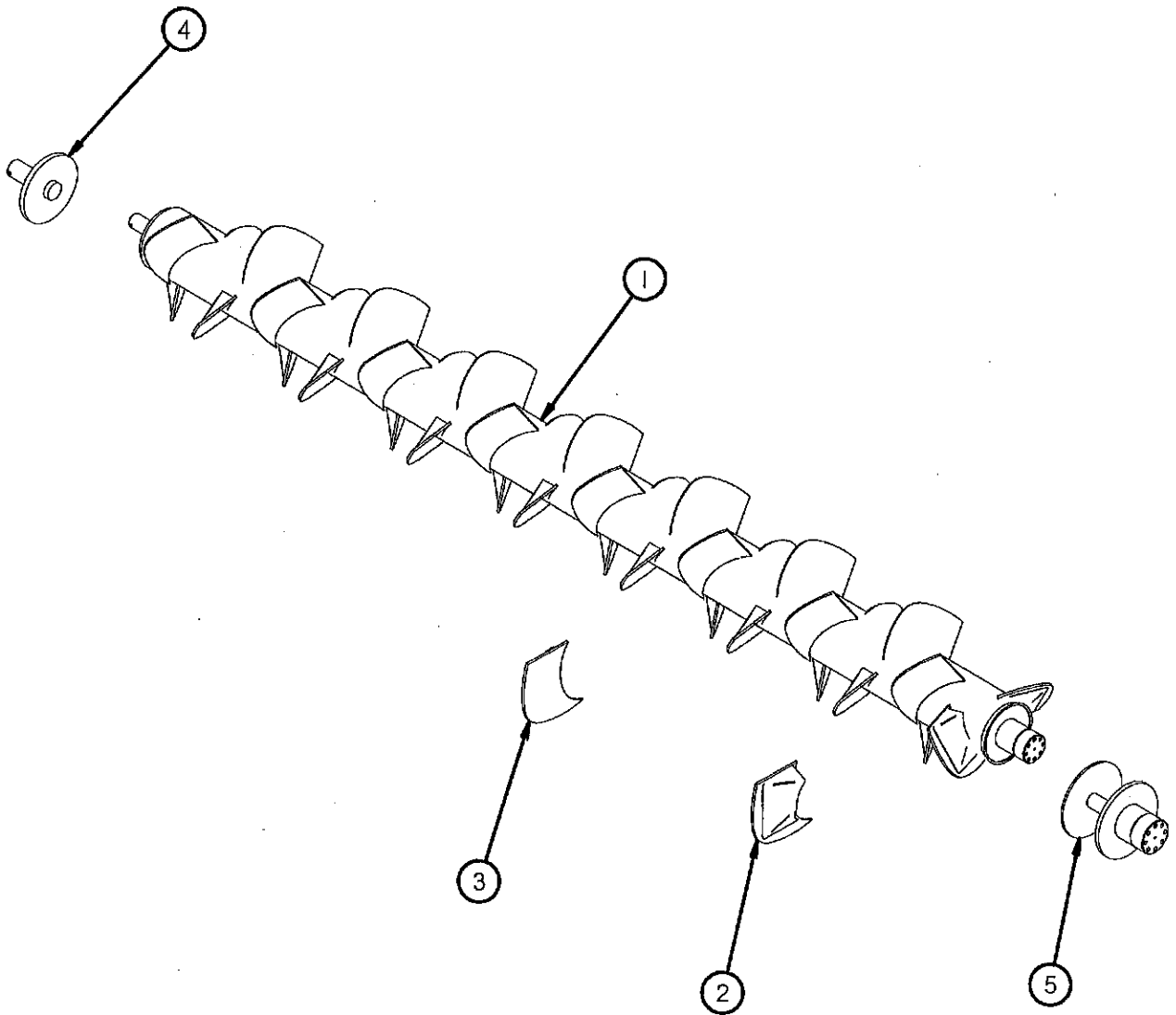
**Figure 12
Lighting**



ITEM #	QUANTITY	PART #	DESCRIPTION
1	2	S309	YELLOW HAZARD LIGHT
2	2	S310	RED TAIL LIGHT
3	4	S308	RUBBER LIGHT MOUNT
4	1	56N155	TAIL LIGHT LOOM
5	1	S441	FLASHER MODULE
6	1	TS317	HARNESS MODULE TO TRACTOR
7	4	HGV162	1/2" RUBBER WIRE HOLDER
8	1	TS129	SPIRAL WRAP, 30"
9	3	YBHH08100	BOLT, 1/4" X 3/4" GR. 5
10	4	YBHH10105	BOLT, 5/16" X 3/4" GR. 5
11	4	YWFL10005	WASHER, FLAT, 5/16" USS
12	3	YWLO08005	WASHER, LOCK, 1/4"
13	4	YWLO10005	WASHER, LOCK, 5/16"
14	3	YNHX08005	HEX NUT, 1/4"-20
15	4	YNHX10005	HEX NUT, 5/16"
*	1	S317	TRACTOR CORD

NOTE: * MEANS NOT SHOWN

Figure 13
Auger



<u>ITEM #</u>	<u>QUANTITY</u>	<u>PART #</u>	<u>DESCRIPTION</u>
1	1	TS200	AUGER
2	2	TS275	AUGER PADDLE FRONT
3	37	TS276	AUGER PADDLE REAR
4	1	TS277	AUGER REAR ASSEMBLY
5	1	TS278	AUGER INPUT SHAFT

Figure 14
Gearbox

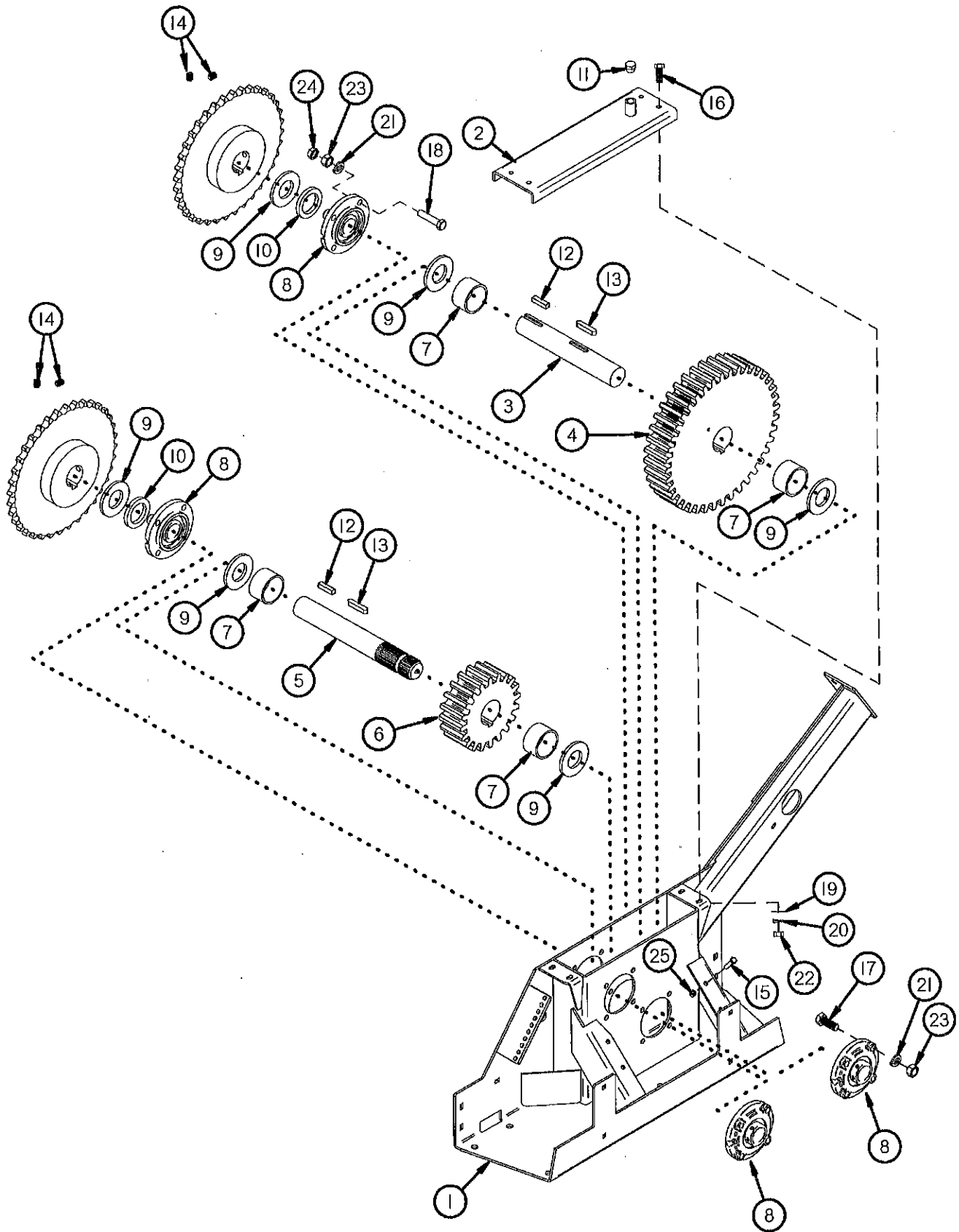
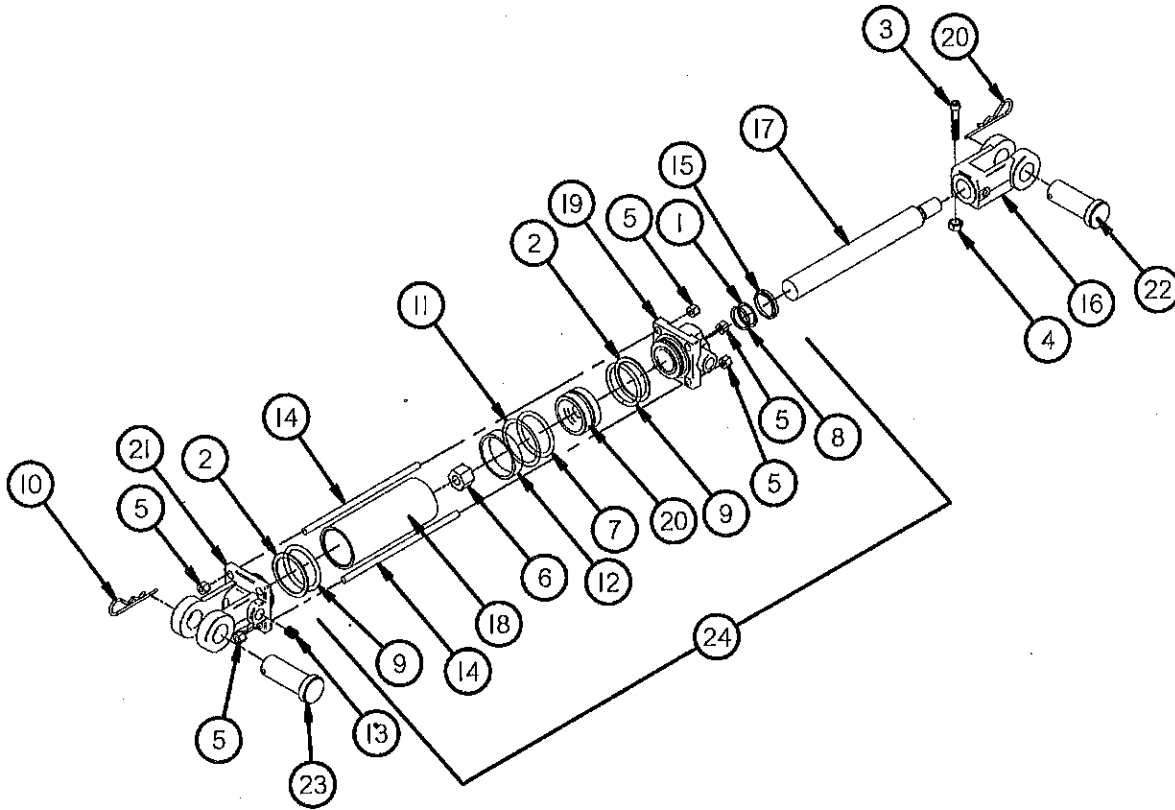


Figure 14 Gearbox

<u>ITEM.#</u>	<u>QUANTITY</u>	<u>PART #</u>	<u>DESCRIPTION</u>
1	1	TS240	GEARBOX
2	1	TS279	GEARBOX COVER
3	1	TS280	SECONDARY SHAFT
4	1	TS281	SPUR GEAR 40 TOOTH
5	1	TS282	SPLINED INPUT SHAFT
6	1	TS283	SPUR GEAR 20 TOOTH
7	4	TS284	BUSHING
8	4	TS285	BEARING
9	A/R	TS286	SHIM, 1/32" THICK
10	A/R	S36	SHIM, 3/16" THICK
*	A/R	S409	SHIM, 1/8" THICK
11	1	SD134	VENT PLUG
12	2	23N303	3/8" X 1-3/4" SQUARE KEY
13	2	56N174	3/8" X 2" SQUARE KEY, ROUND ENDS (HARDENED)
14	4	YSKP12010	SET SCREW, SOCKET, KNURLED CUP PT, 3/8"-16 X 1/2"
15	4	YBHH10075	BOLT, 5/16" X 2" GR. 8
16	4	YBHH12010	BOLT, 3/8" X 1" GR. 5
17	15	YBHH16065	BOLT, 1/2" X 2" GR. 5
18	1	YBHH16095	BOLT, 1/2" X 2-1/4" GR. 5
19	4	YWFL12005	WASHER, FLAT, 3/8" USS
20	4	YWLO12005	WASHER, LOCK, 3/8"
21	16	YWLO16005	WASHER, LOCK, 1/2"
22	4	YNHX12005	HEX NUT, 3/8"-16
23	16	YNHX16005	HEX NUT, 1/2"
24	1	YNJM16005	HEX NUT, JAM, 1/2"-13
25	4	YNTL10005	HEX NUT, TOP LOCK, 5/16"-18
*	1	TS216	GEARBOX COMPLETE

NOTE: * MEANS NOT SHOWN
A/R: MEANS AS REQUIRED

Figure 15 Auger Front & Rear Hydraulic Cylinder

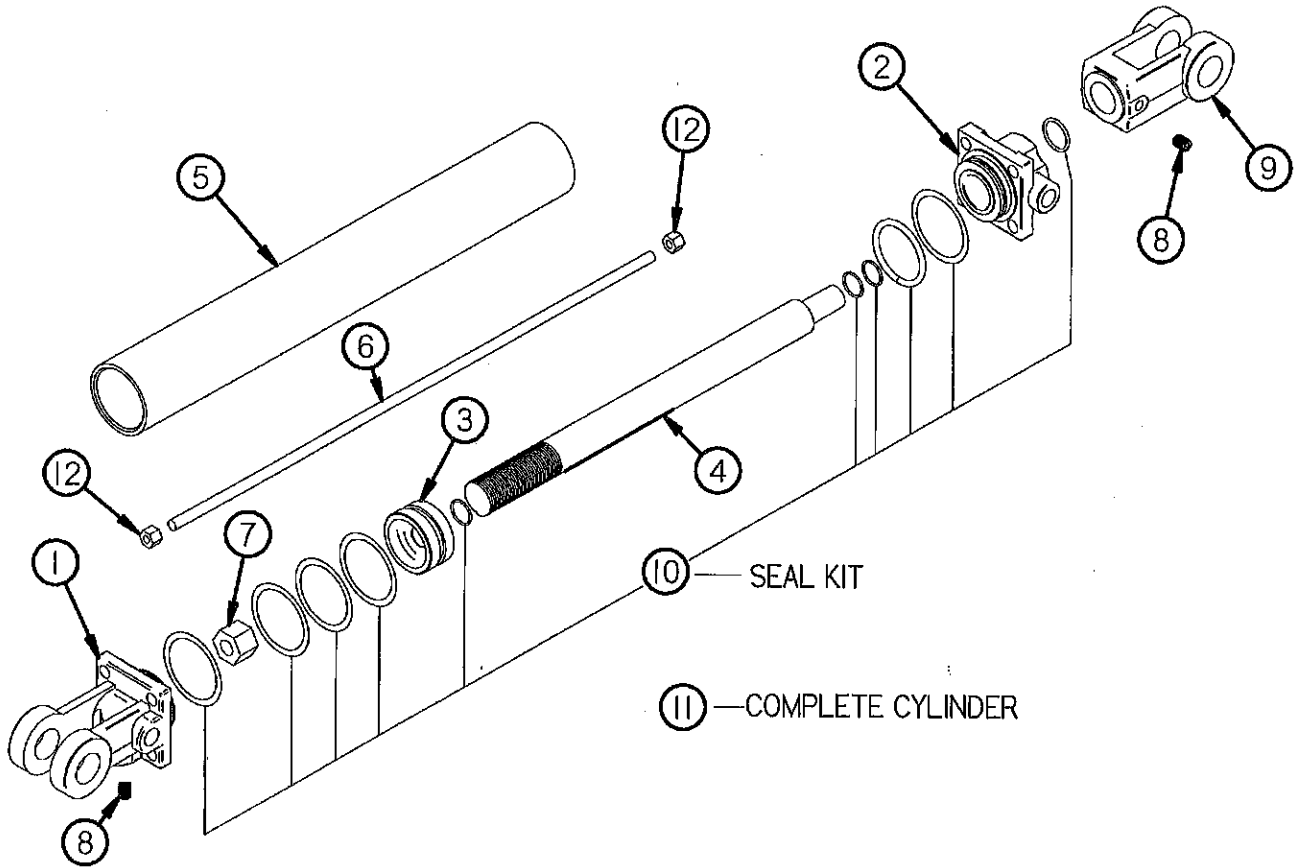


PART #

<u>ITEM #</u>	<u>QUANTITY</u>	<u>3" BORE</u>	<u>3-1/4" BORE</u>	<u>DESCRIPTION</u>
1	1	TS140	"	BACK-UP (ROD)
2	2	TS141	TS164	BACK-UP (HEAD & BASE)
3	1	TS142	"	CAPSCREW
4	1	TS143	"	CLEVIS NUT
5	8	TS144	TS165	TIE ROD NUT
6	1	TS145	TS166	PISTON NUT
7	1	TS146	TS167	O-RING (PRELOAD)
8	1	TS147	"	O-RING (ROD)
9	2	TS148	TS168	O-RING (HEAD & BASE)
10	2	TS149	"	PIN CLIP
11	1	TS150	TS169	TEFLON RING
12	1	TS151	TS170	WEAR RING
13	1	TS152	"	PLUG ASSY (3/4-16 SAE)
14	4	TS153	TS171	TIE ROD
15	1	TS154	"	WIPER
16	1	TS155	"	CLEVIS ASSEMBLY
17	1	TS156	TS172	ROD
18	1	TS157	TS173	TUBE
19	1	TS158	TS174	HEAD (3/4-16 SAE PORT)
20	1	TS159	TS175	PISTON NUT
21	1	TS160	TS176	BASE (3/4-16 SAE PORT)
22	1	TS161	"	CLEVIS PIN (ROD) 1" DIA.
23	1	TS162	"	CLEVIS PIN (BASE) 1" DIA.
24	1	TS163	TS177	SEAL KIT

NOTE: " MEANS SAME AS PREVIOUS MODEL

Figure 16 Expeller Door Hydraulic Cylinder

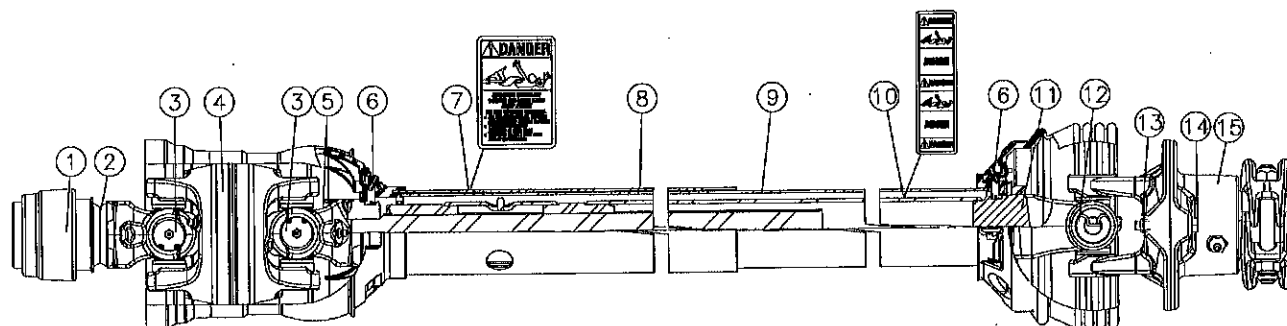


<u>ITEM #</u>	<u>QUANTITY</u>	<u>PART #</u>	<u>DESCRIPTION</u>
1	1	23N142	CLEVIS CAP
2	1	23N143	ROD CAP
3	1	23N144	PISTON
4	1	23N145A	ROD
5	1	23N146	CYLINDER TUBE
6	4	23N147	TIE ROD
7	1	23N148	PISTON NUT
8	2	23N149	PLUG
9	1	23N150	ROD CLEVIS
10	1	23N151	SEAL KIT
11	1	23N111A	COMPLETE HYDRAULIC CYLINDER
12	8	YNHX12005	HEX NUT, 3/8"-16

Figure 17 PTO

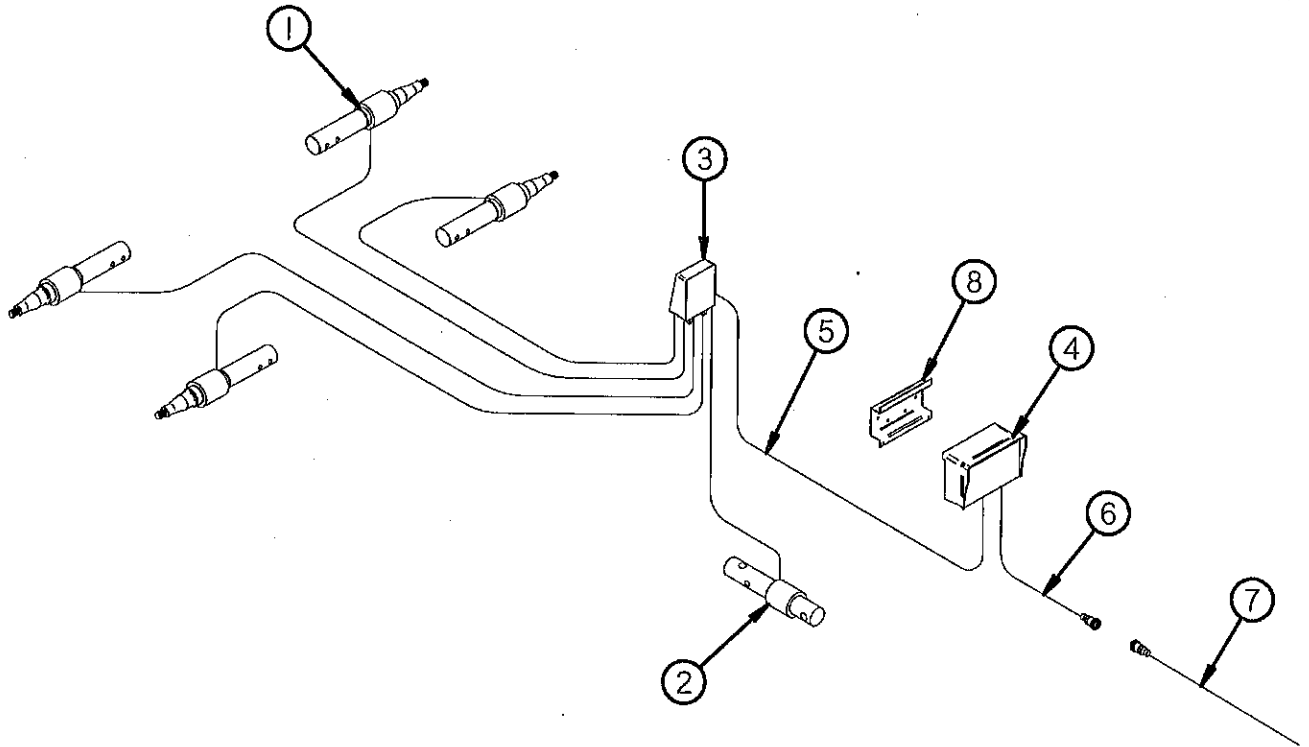
16 17

18 19



ITEM#	PART #		DESCRIPTION
	1000RPM (1-3/8)	1000 RPM (1-3/4)	
1	16SV274	16SV275	SAFETY SLIDE LOCK REPAIR KIT
2	TS190	TS193	SAFETY SLIDE LOCK YOKE ASSEMBLY
3	TS179	"	CROSS KIT
4	TS180	"	CENTER HOUSING
5	TS287	"	YOKE & SHAFT
6	16SV383	"	GUARD REPAIR KIT
7	16SV283	"	SAFETY SIGN 13-10021
8	TS288	"	OUTER GUARD
9	TS289	"	INNER GUARD
10	16SV388	"	SAFETY SIGN 13-10022
11	TS290	"	YOKE, TUBE & SLIP SLEEVE
12	16SV179	"	35R CROSS & BEARING KIT
13	YNTL10005	"	HEX NUT, TOP LOCK, 5/16"-18
14	YBHH10075	"	BOLT, 5/16" X 2" GR. 8
15	TS291	"	OR BALL SHEAR ASSEMBLY
16	TS292	TS296	JOINT & SHAFT HALF ASSM. W/GUARD
17	TS293	TS297	JOINT & SHAFT HALF ASSM.
18	TS294	"	JOINT & TUBE HALF ASSM. W/GUARD
19	TS295	"	JOINT & TUBE HALF ASSM.
20	TS303	—	COMPLETE PTO (#245-25123)
21	—	TS304	COMPLETE PTO (#245-25124)

Figure 18 Scale



<u>ITEM #</u>	<u>QUANTITY</u>	<u>PART #</u>	<u>DESCRIPTION</u>
1	4	TS334	SPINDLE LOAD CELL
*	4	TS335	SPINDLE LOAD CELL (FOR OPTIONAL TANDEM)
2	1	TS336	HITCH LOAD CELL
3	1	TS83	JUNCTION BOX
4	1	TS339	SCALE DISPLAY
*	1	TS337	SCALE DISPLAY W/GPS (OPTIONAL)
5	1	TS338	JUNCTION BOX CORD
6	1	TS385	POWER CORD
7	1	16SV269	TRACTOR POWER CORD
8	1	GM408	SCALE HANGER BRACKET

NOTE: * MEANS NOT SHOWN

